



East Pye Solar Project
Environmental Impact Assessment (EIA) Scoping Report
Volume II - Part 2
Date: January 2025
PINS Reference: EN0110014

FIGURES 5.1 - 7.4

Contents

5.1	Potential Sources of Contamination
7.1	Zone of Theoretical Visibility
7.2	Landscape Designations Plan
7.3	Landscape Character Plan
7.4	Topography Plan



FIGURE 5.1
POTENTIAL SOURCES OF CONTAMINATION LOCATION PLAN

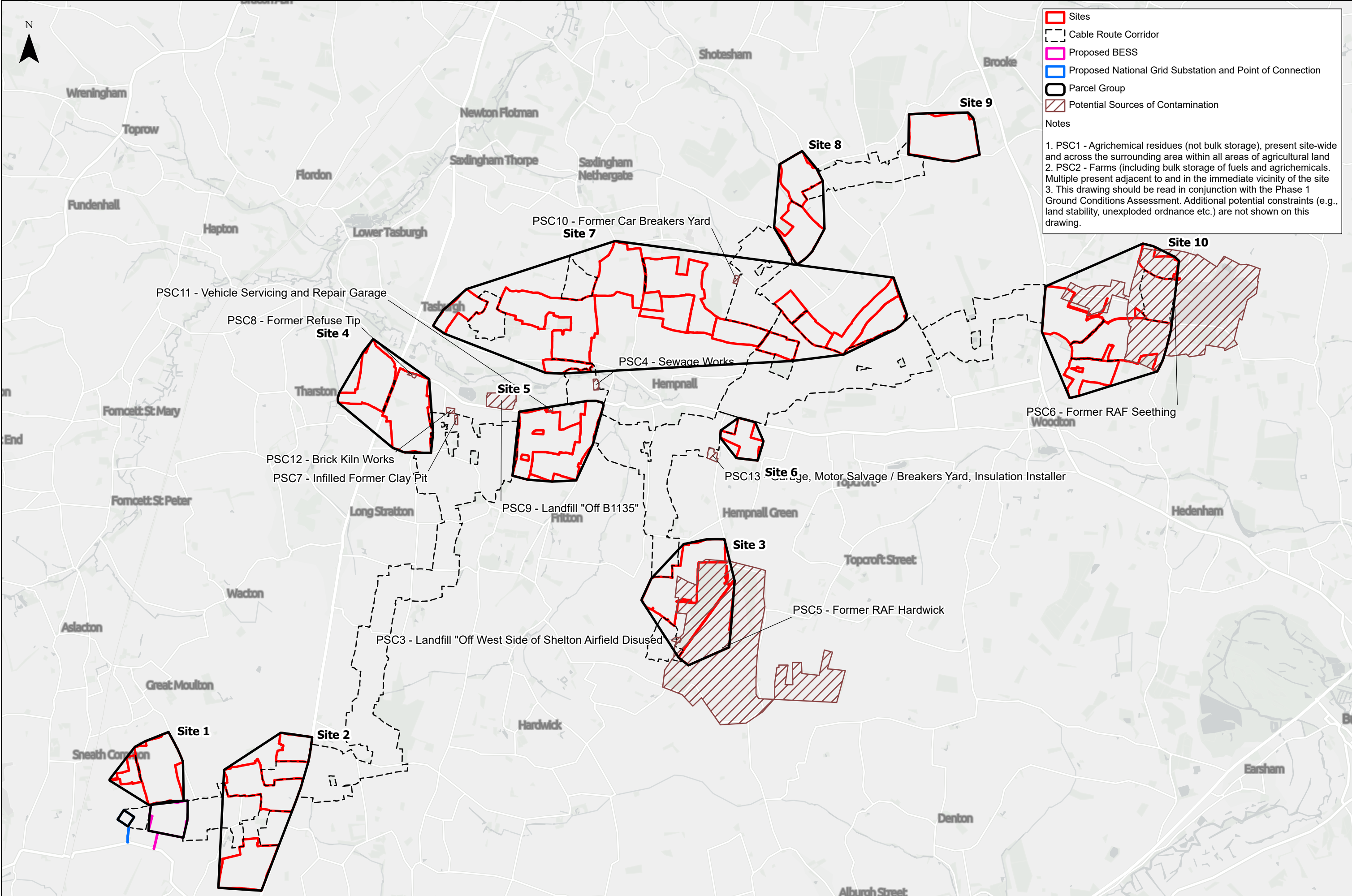
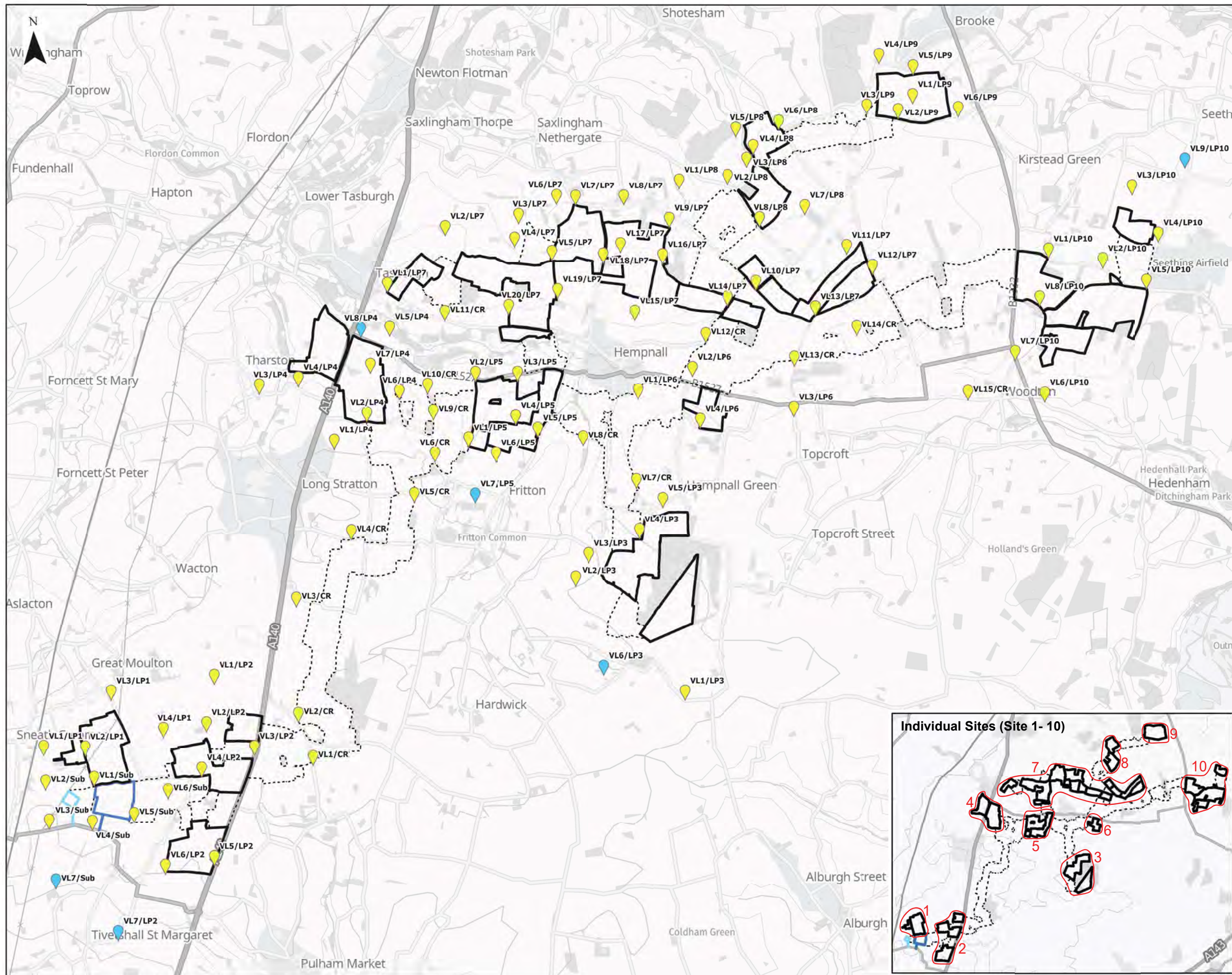
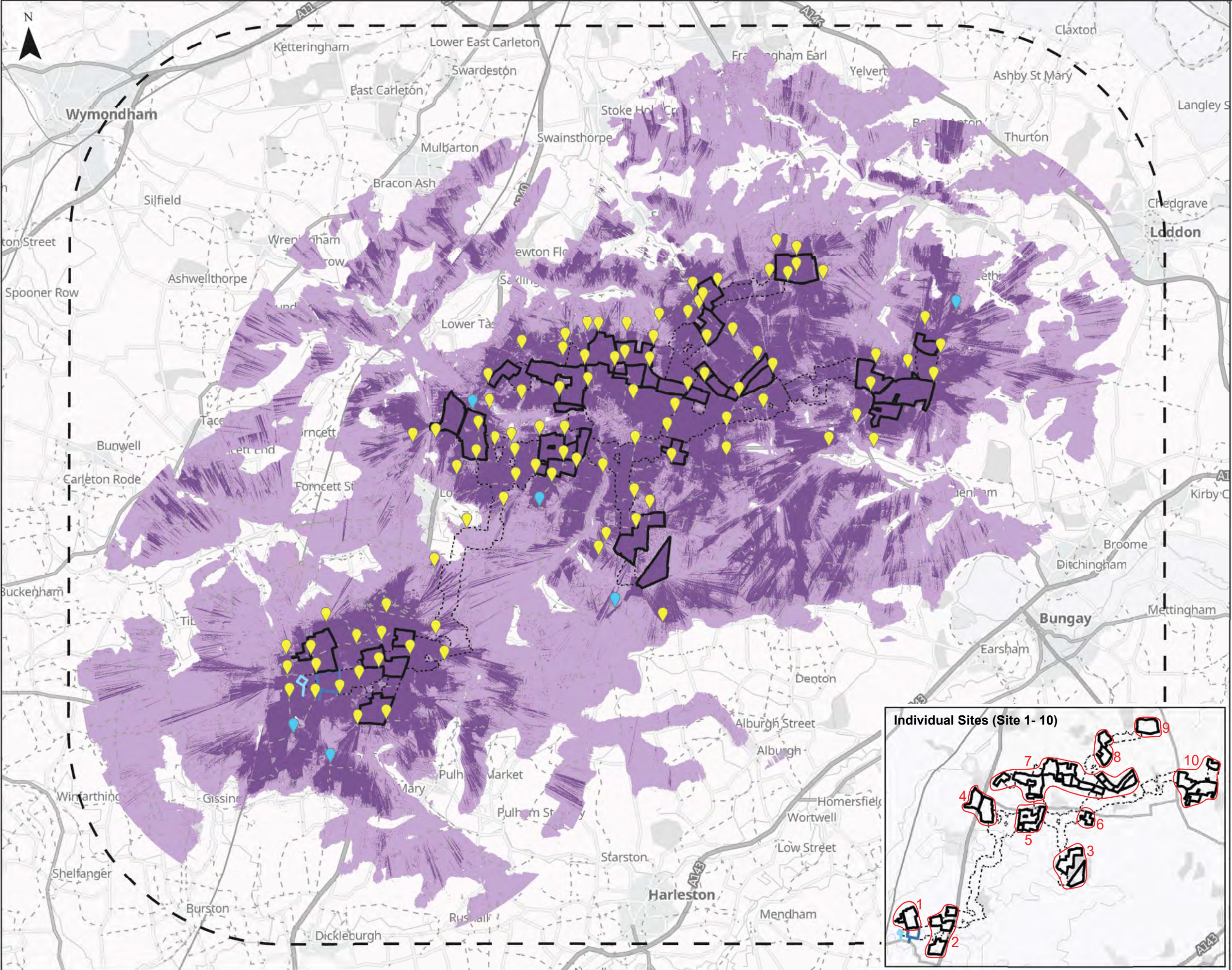




FIGURE 7.1
ZONE OF THEORETICAL VISIBILITY



- LEGEND:**
- Individual Sites (Site 1-10)
 - Proposed BESS
 - Proposed National Grid Substation
 - Cable Route Corridor
 - Primary View Location
 - Secondary View Location
- Key:**
- VL = View Location
LP = Land Parcel
CR = Cable Route



LEGEND:

- Individual Sites (Site 1- 10)
- Proposed BESS
- Proposed National Grid Substation
- Cable Route Corridor
- Search Area
- Footpaths
- Primary View Location
- Secondary View Location

Zone of Theoretical Visibility (ZTV) of proposed Site:

- Visibility using DSM¹
- Visibility using DTM²

NOTES:

1) This ZTV was run on a Digital Surface Model (DSM) using National LIDAR Programme data, 1m resolution grid (2021 and 2022).

2) This ZTV was run on a Digital Terrain Model (DTM) using National LIDAR Programme data, 1m resolution grid (2021 and 2022).

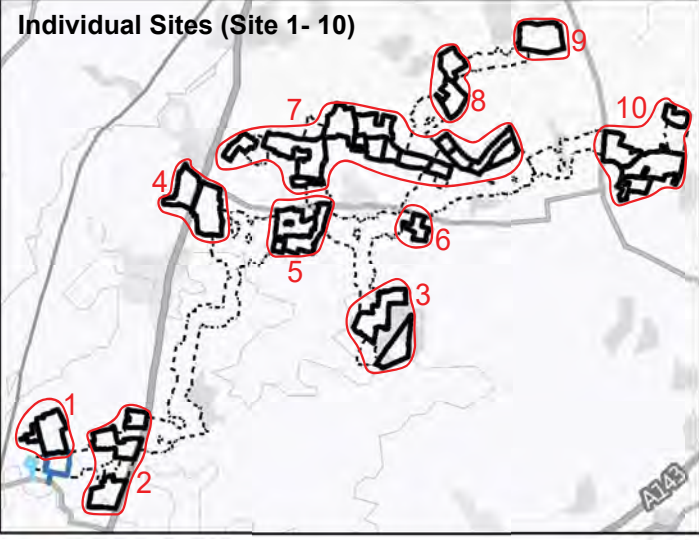
3) The ZTV was created using ESRI ArcGIS Pro version 3.0.2 Spatial Analyst tool.

4) The ZTV illustrates the area of theoretical visibility of the defined area.

5) BESS height was set to 5m, substation height to 8m and solar array heights to 4.5m. Observer height was set to 1.6m.

6) Viewsheds have been clipped to a 5km search area.

7) The ZTV analysis remains only as a tool in the visual appraisal of the project. It's accuracy is limited to the digital information that it has been based upon and the algorithm used in it's calculation.



EAST PYE SOLAR PROJECT

Figure 7.1.1
Zone of Theoretical Visibility (ZTV)
Combined Viewsheds with View Locations

0 1 2 4 6 km

Contains OS data © Crown Copyright and database right 2023
Contains data from OS Zoomstack

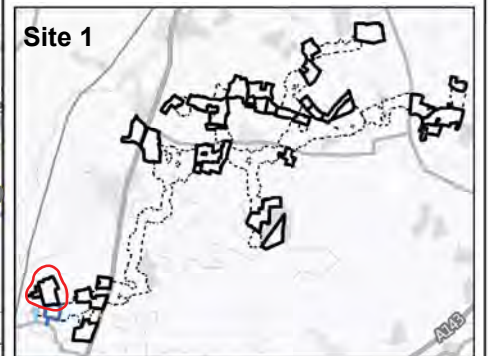
1:85,000 @ A3	Date: 14.10.2024
Drawn: IM	Checked: AC
Figure: 333101211_02	Rev: A



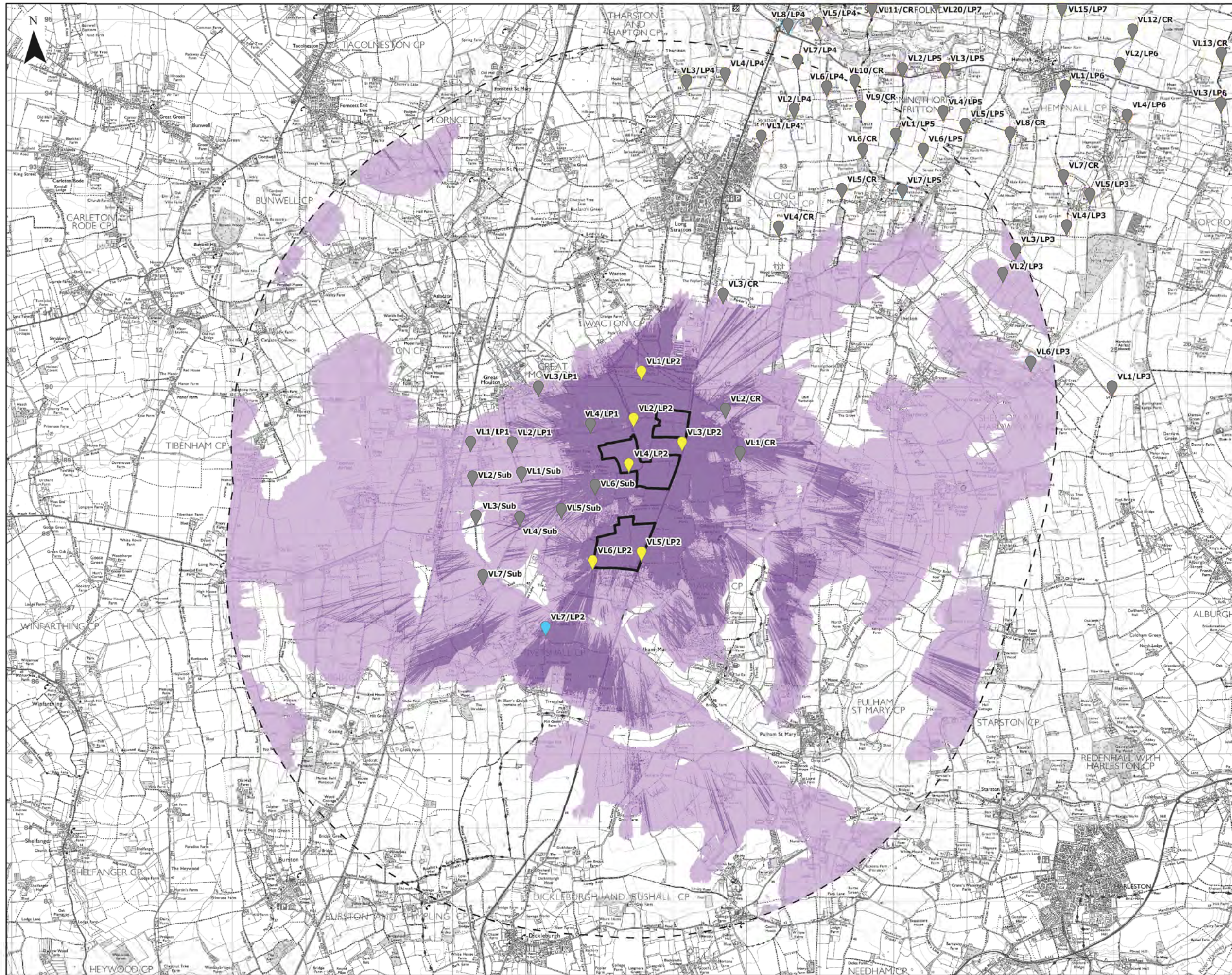
- LEGEND:
- Site Option
 - Search Area
 - Primary View Location
 - Secondary View Location
 - View Locations relating to other sites and cable routes

Zone of Theoretical Visibility (ZTV) of proposed Site:

- Visibility using DSM¹
- Visibility using DTM²



- NOTES:
- 1) This ZTV was run on a Digital Surface Model (DSM) using National LIDAR Programme data, 1m resolution grid (2021 and 2022).
 - 2) This ZTV was run on a Digital Terrain Model (DTM) using National LIDAR Programme data, 1m resolution grid (2021 and 2022).
 - 3) The ZTV was created using ESRI ArcGIS Pro version 3.0.2 Spatial Analyst tool.
 - 4) The ZTV illustrates the area of theoretical visibility of the defined area.
 - 5) Solar array height was set to 4.5m and observer height was set to 1.6m.
 - 6) Viewsheds have been clipped to a 5km search area per individual land parcel.
 - 7) The ZTV analysis remains only as a tool in the visual appraisal of the project. It's accuracy is limited to the digital information that it has been based upon and the algorithm used in it's calculation.



LEGEND:

Site Option

Search Area

Primary View Location

Secondary View Location

View Locations relating to other sites and cable routes

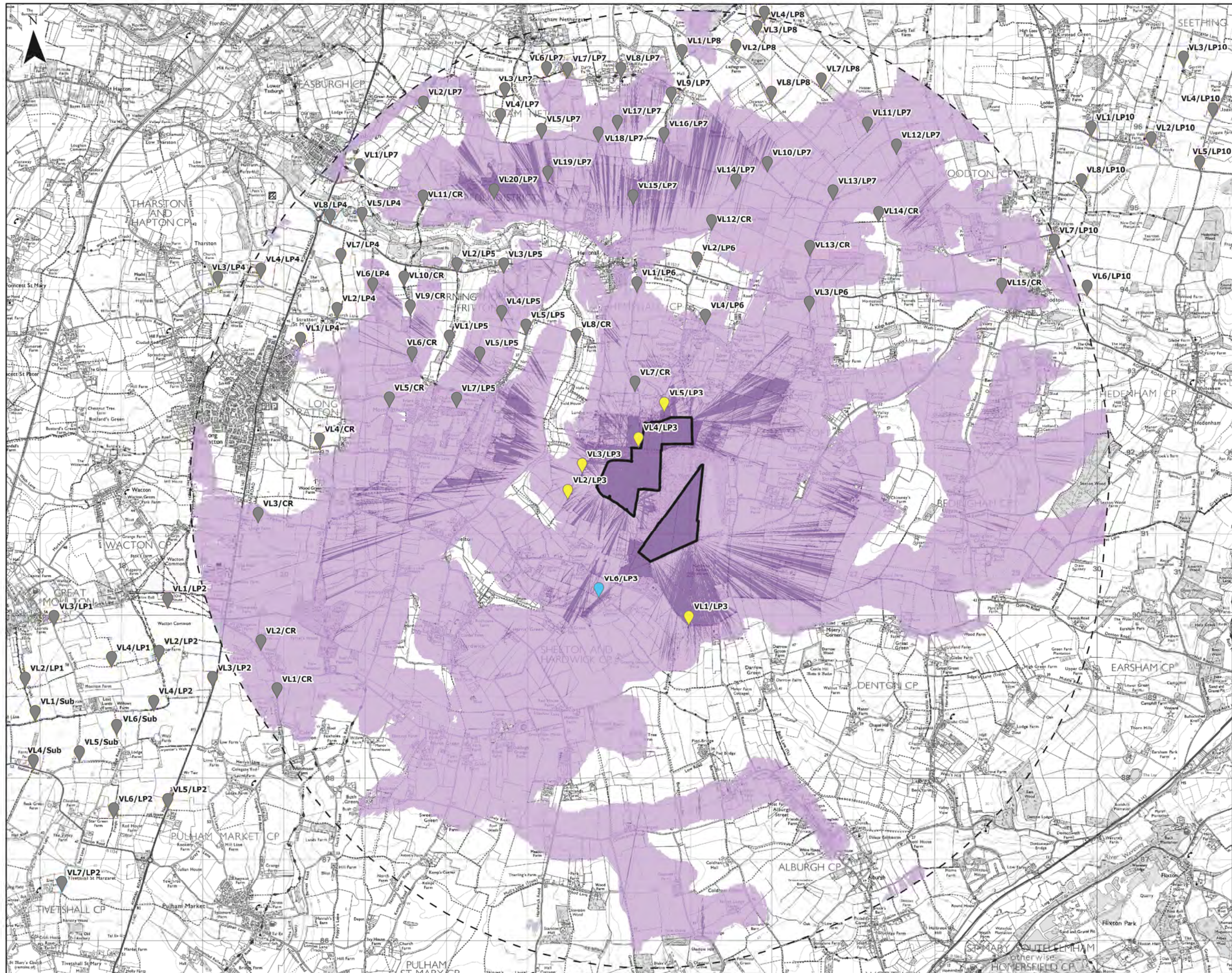
Zone of Theoretical Visibility (ZTV) of proposed Site:

Visibility using DSM¹

Visibility using DTM²

Site 2

NOTES:
1) This ZTV was run on a Digital Surface Model (DSM) using National LIDAR Programme data, 1m resolution grid (2021 and 2022).
2) This ZTV was run on a Digital Terrain Model (DTM) using National LIDAR Programme data, 1m resolution grid (2021 and 2022).
3) The ZTV was created using ESRI ArcGIS Pro version 3.0.2 Spatial Analyst tool.
4) The ZTV illustrates the area of theoretical visibility of the defined area.
5) Solar array height was set to 4.5m and observer height was set to 1.6m.
6) Viewsheds have been clipped to a 5km search area per individual land parcel.
7) The ZTV analysis remains only as a tool in the visual appraisal of the project. It's accuracy is limited to the digital information that it has been based upon and the algorithm used in it's calculation.



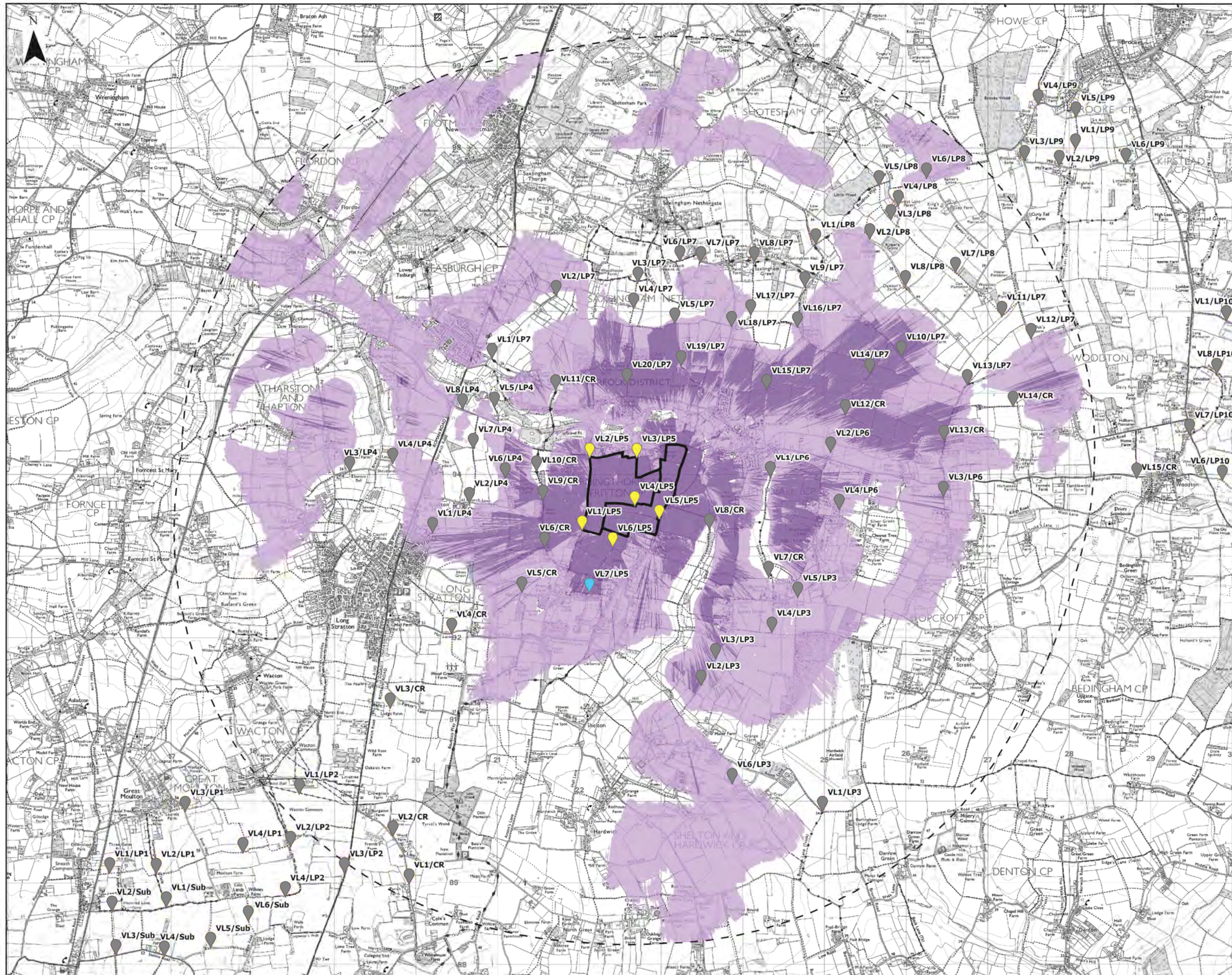
- LEGEND:
- Site Option
 - Search Area
 - Primary View Location
 - Secondary View Location
 - View Locations relating to other sites and cable routes

Zone of Theoretical Visibility (ZTV) of proposed Site:

- Visibility using DSM¹
- Visibility using DTM²



- NOTES:
- 1) This ZTV was run on a Digital Surface Model (DSM) using National LIDAR Programme data, 1m resolution grid (2021 and 2022).
 - 2) This ZTV was run on a Digital Terrain Model (DTM) using National LIDAR Programme data, 1m resolution grid (2021 and 2022).
 - 3) The ZTV was created using ESRI ArcGIS Pro version 3.0.2 Spatial Analyst tool.
 - 4) The ZTV illustrates the area of theoretical visibility of the defined area.
 - 5) Solar array height was set to 4.5m and observer height was set to 1.6m.
 - 6) Viewsheds have been clipped to a 5km search area per individual land parcel.
 - 7) The ZTV analysis remains only as a tool in the visual appraisal of the project. It's accuracy is limited to the digital information that it has been based upon and the algorithm used in it's calculation.



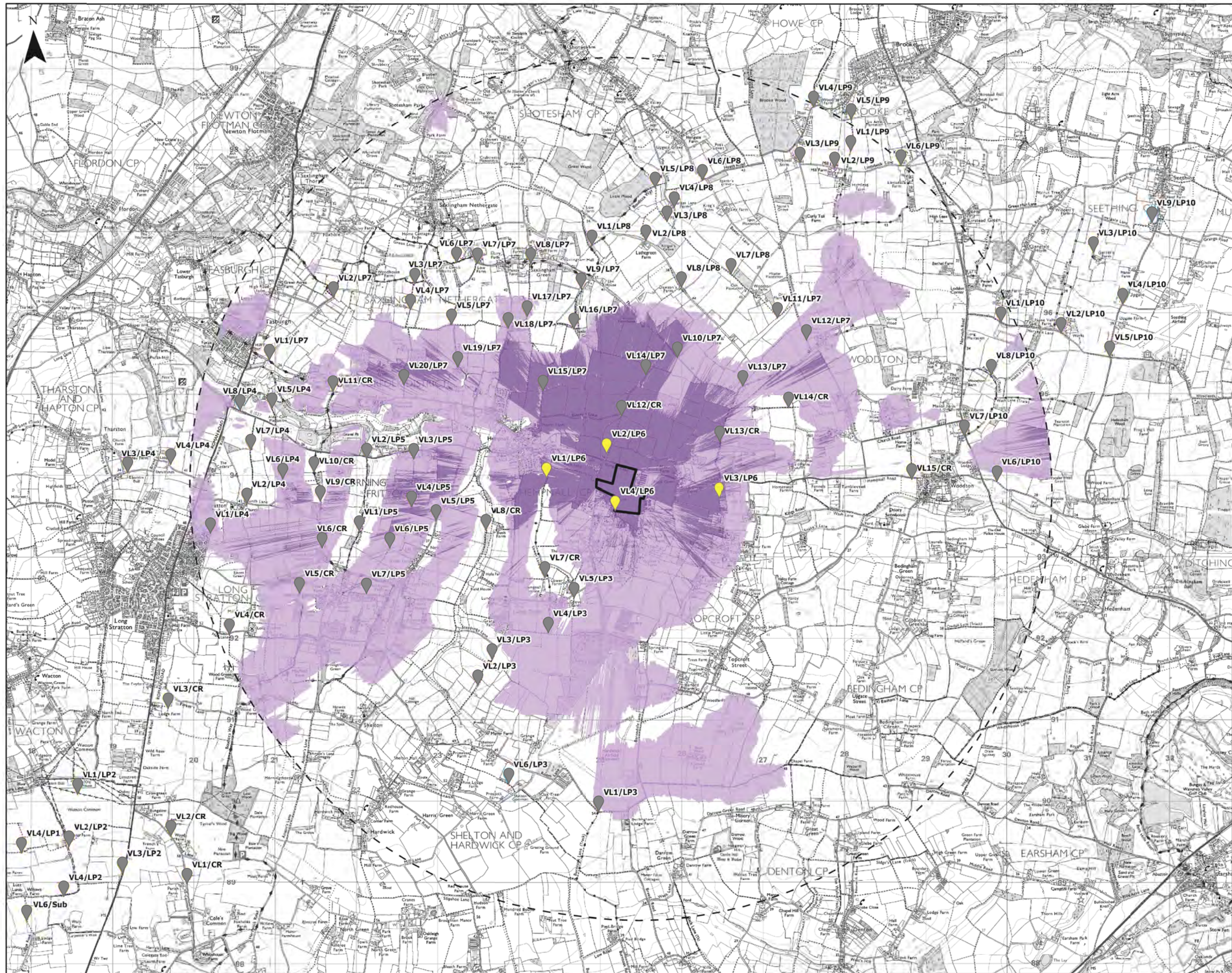
- LEGEND:
- Site Option
 - Search Area
 - Primary View Location
 - Secondary View Location
 - View Locations relating to other sites and cable routes

Zone of Theoretical Visibility (ZTV) of proposed Site:

- Visibility using DSM¹
- Visibility using DTM²



- NOTES:
- 1) This ZTV was run on a Digital Surface Model (DSM) using National LIDAR Programme data, 1m resolution grid (2021 and 2022).
 - 2) This ZTV was run on a Digital Terrain Model (DTM) using National LIDAR Programme data, 1m resolution grid (2021 and 2022).
 - 3) The ZTV was created using ESRI ArcGIS Pro version 3.0.2 Spatial Analyst tool.
 - 4) The ZTV illustrates the area of theoretical visibility of the defined area.
 - 5) Solar array height was set to 4.5m and observer height was set to 1.6m.
 - 6) Viewsheds have been clipped to a 5km search area per individual land parcel.
 - 7) The ZTV analysis remains only as a tool in the visual appraisal of the project. It's accuracy is limited to the digital information that it has been based upon and the algorithm used in it's calculation.



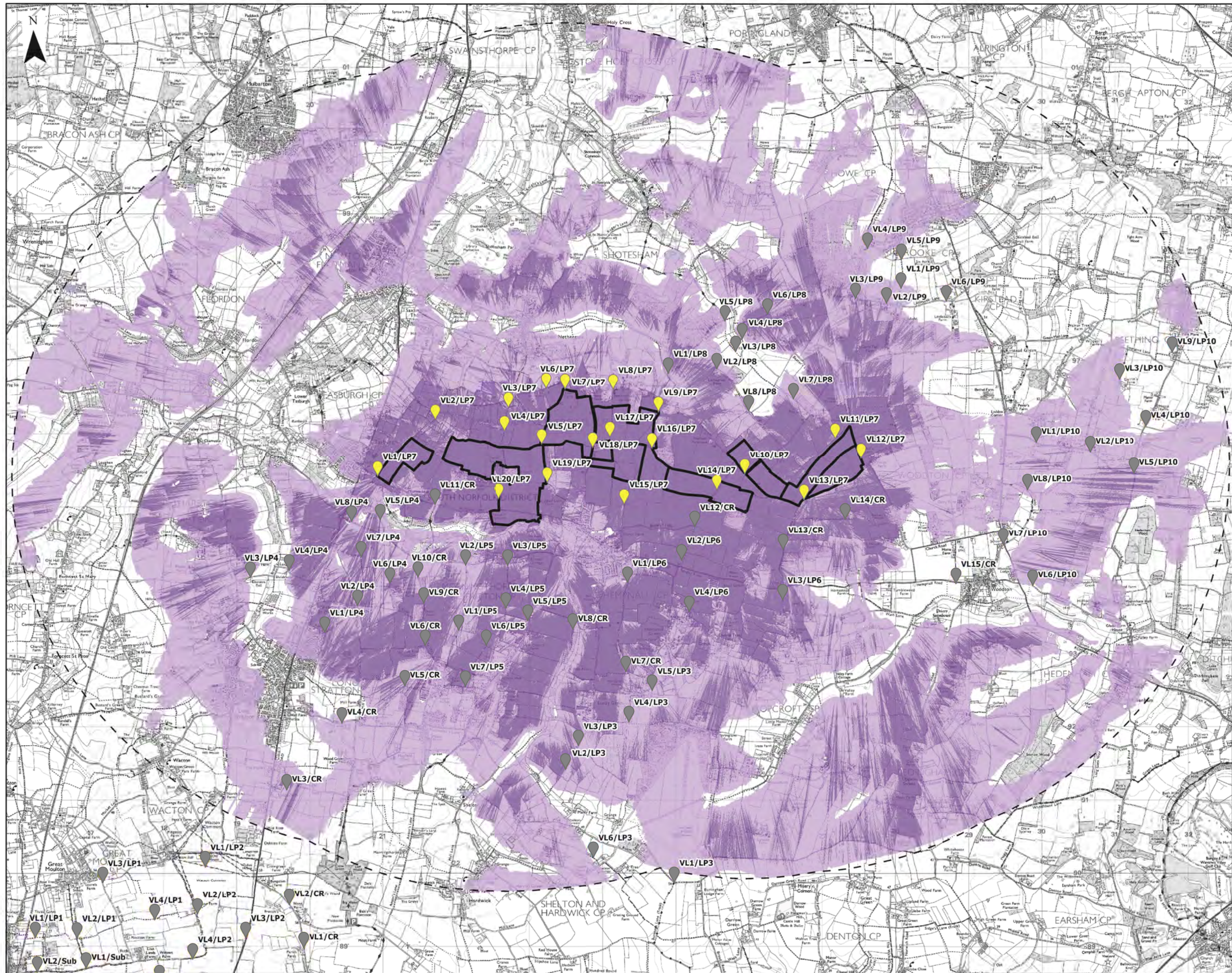
- LEGEND:
- Site Option
 - Search Area
 - Primary View Location
 - Secondary View Location
 - View Locations relating to other sites and cable routes

Zone of Theoretical Visibility (ZTV) of proposed Site:

- Visibility using DSM¹
- Visibility using DTM²



- NOTES:
- 1) This ZTV was run on a Digital Surface Model (DSM) using National LIDAR Programme data, 1m resolution grid (2021 and 2022).
 - 2) This ZTV was run on a Digital Terrain Model (DTM) using National LIDAR Programme data, 1m resolution grid (2021 and 2022).
 - 3) The ZTV was created using ESRI ArcGIS Pro version 3.0.2 Spatial Analyst tool.
 - 4) The ZTV illustrates the area of theoretical visibility of the defined area.
 - 5) Solar array height was set to 4.5m and observer height was set to 1.6m.
 - 6) Viewsheds have been clipped to a 5km search area per individual land parcel.
 - 7) The ZTV analysis remains only as a tool in the visual appraisal of the project. It's accuracy is limited to the digital information that it has been based upon and the algorithm used in it's calculation.



LEGEND:

- Site Option
- Search Area
- Primary View Location
- Secondary View Location
- View Locations relating to other sites and cable routes

Zone of Theoretical Visibility (ZTV) of proposed Site:

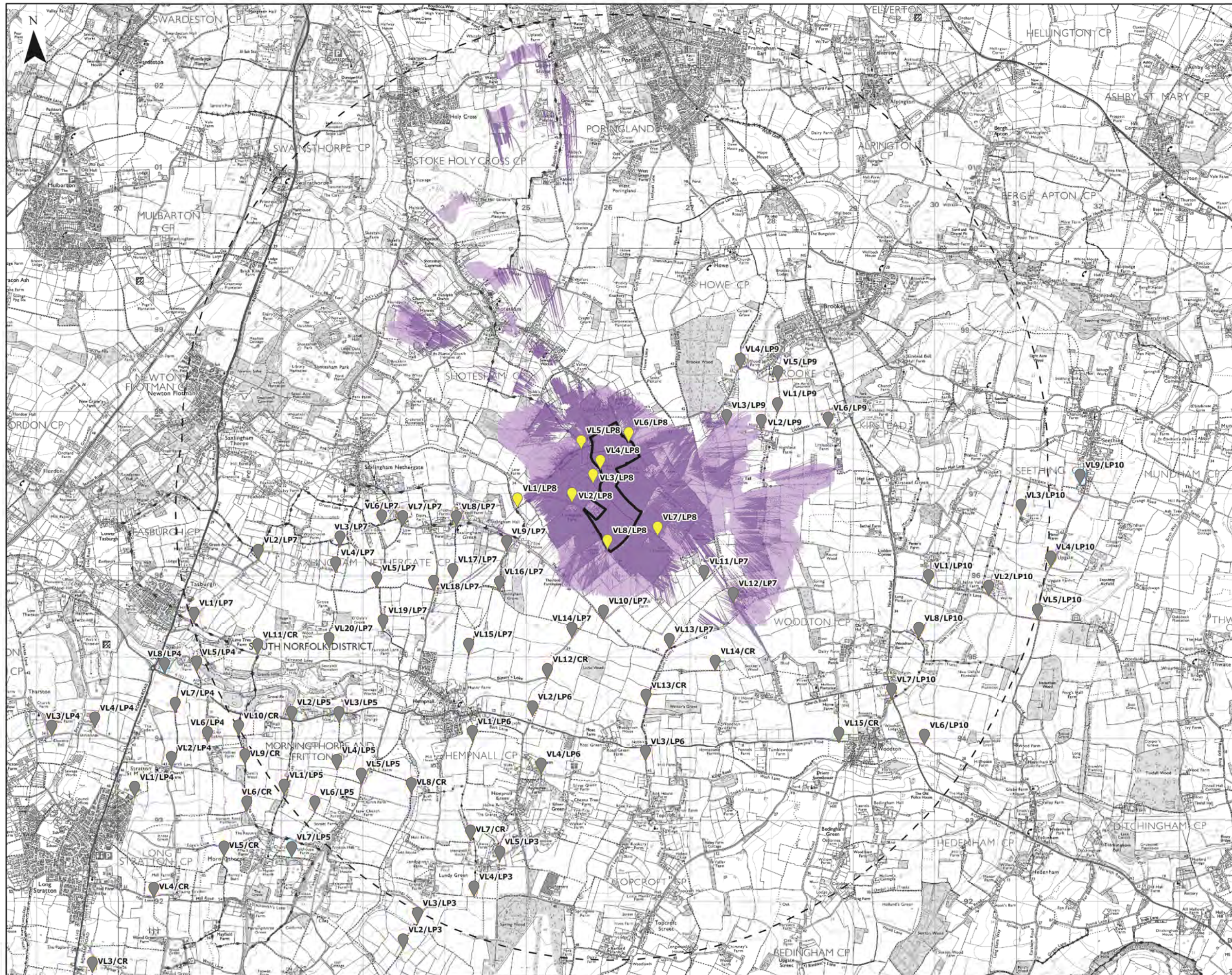
- Visibility using DSM¹
- Visibility using DTM²

Site 7



NOTES:

- 1) This ZTV was run on a Digital Surface Model (DSM) using National LIDAR Programme data, 1m resolution grid (2021 and 2022).
- 2) This ZTV was run on a Digital Terrain Model (DTM) using National LIDAR Programme data, 1m resolution grid (2021 and 2022).
- 3) The ZTV was created using ESRI ArcGIS Pro version 3.0.2 Spatial Analyst tool.
- 4) The ZTV illustrates the area of theoretical visibility of the defined area.
- 5) Solar array height was set to 4.5m and observer height was set to 1.6m.
- 6) Viewsheds have been clipped to a 5km search area per individual land parcel.
- 7) The ZTV analysis remains only as a tool in the visual appraisal of the project. It's accuracy is limited to the digital information that it has been based upon and the algorithm used in it's calculation.



LEGEND:

- Site Option
- Search Area
- Primary View Location
- Secondary View Location
- View Locations relating to other sites and cable routes

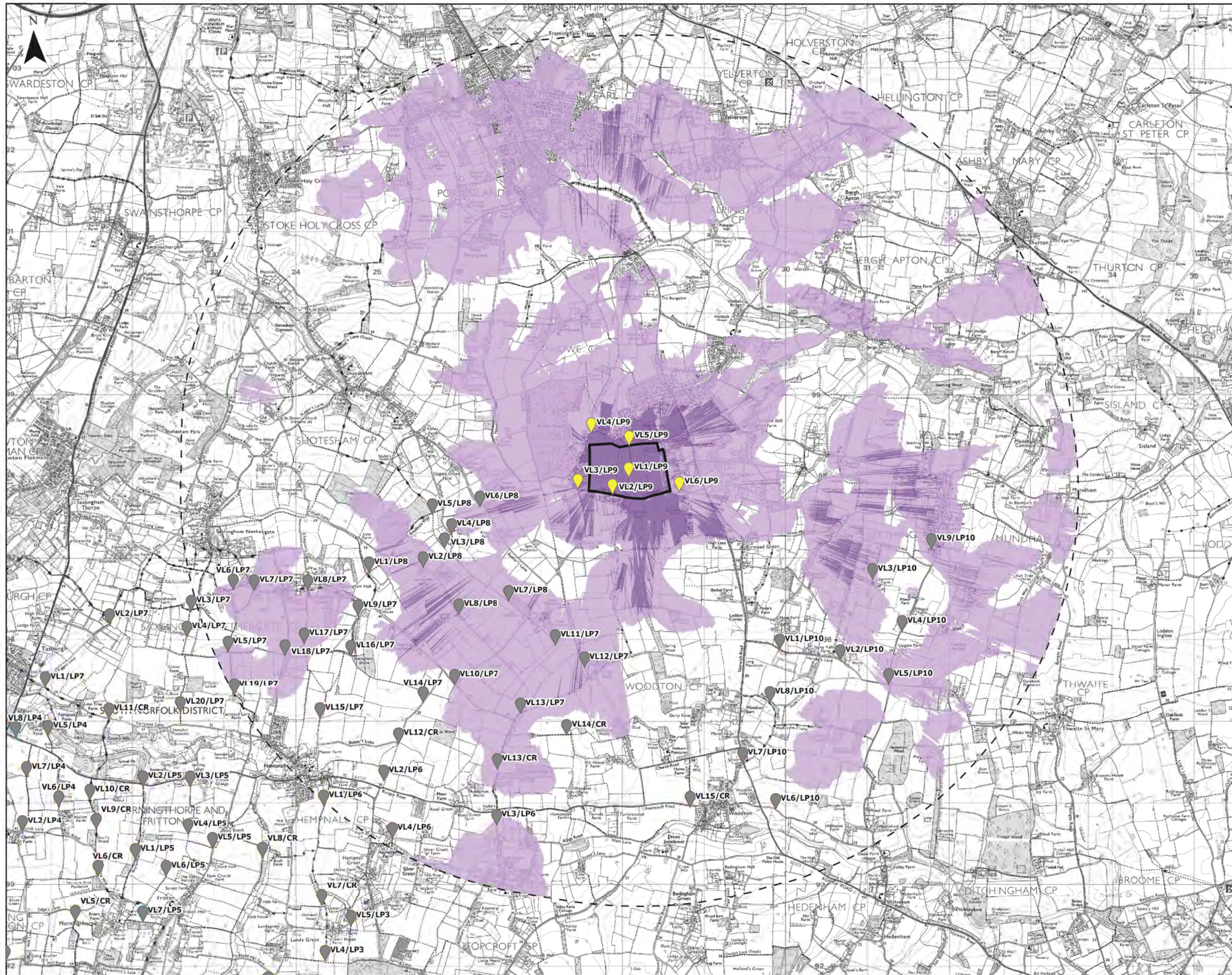
Zone of Theoretical Visibility (ZTV) of proposed Site:

- Visibility using DSM¹
- Visibility using DTM²



NOTES:

- 1) This ZTV was run on a Digital Surface Model (DSM) using National LIDAR Programme data, 1m resolution grid (2021 and 2022).
- 2) This ZTV was run on a Digital Terrain Model (DTM) using National LIDAR Programme data, 1m resolution grid (2021 and 2022).
- 3) The ZTV was created using ESRI ArcGIS Pro version 3.0.2 Spatial Analyst tool.
- 4) The ZTV illustrates the area of theoretical visibility of the defined area.
- 5) Solar array height was set to 4.5m and observer height was set to 1.6m.
- 6) Viewsheds have been clipped to a 5km search area per individual land parcel.
- 7) The ZTV analysis remains only as a tool in the visual appraisal of the project. It's accuracy is limited to the digital information that it has been based upon and the algorithm used in it's calculation.



LEGEND:

- Site Option
- Search Area
- Primary View Location
- Secondary View Location
- View Locations relating to other sites and cable routes

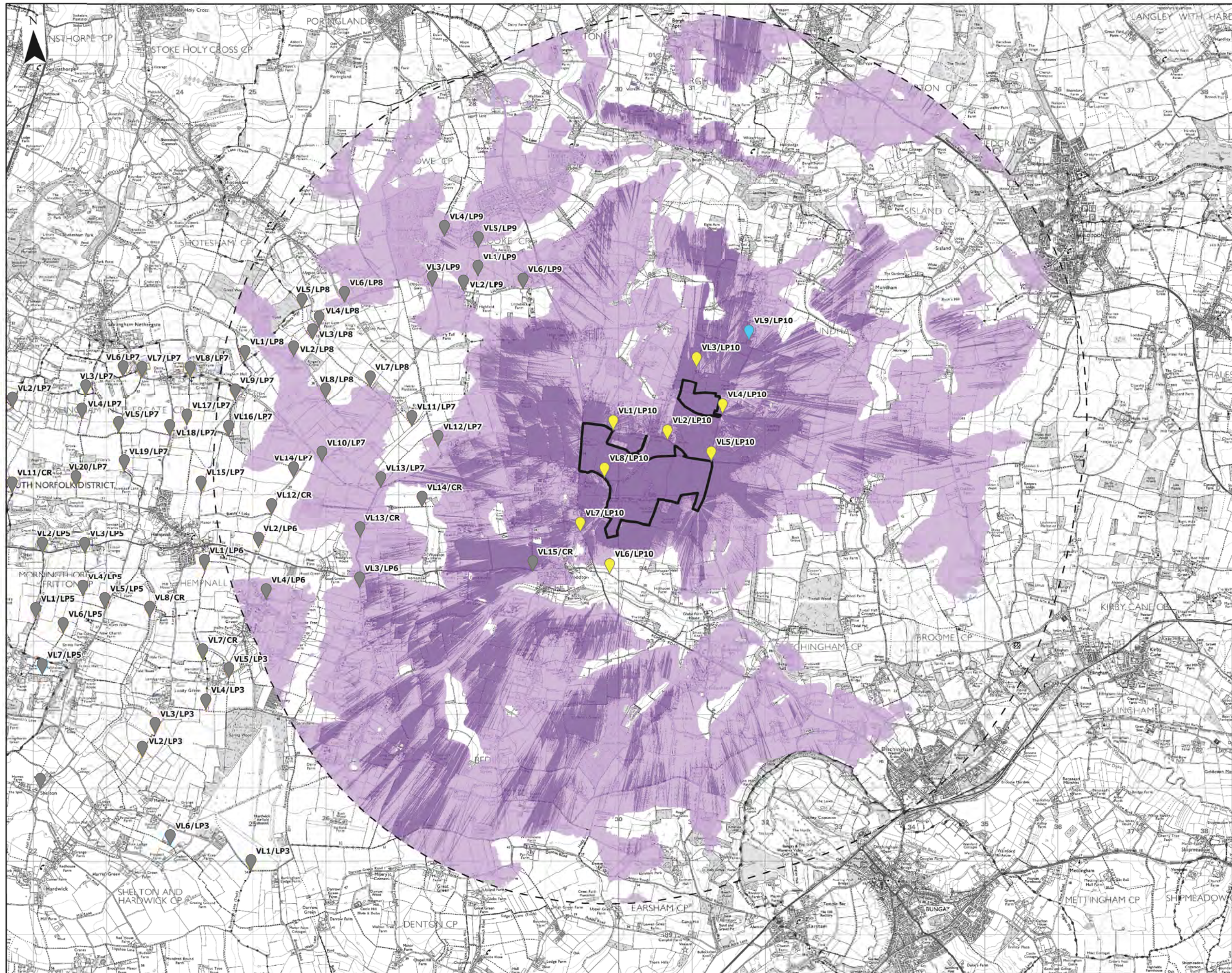
Zone of Theoretical Visibility (ZTV) of proposed Site:

- Visibility using DSM¹
- Visibility using DTM²



NOTES:

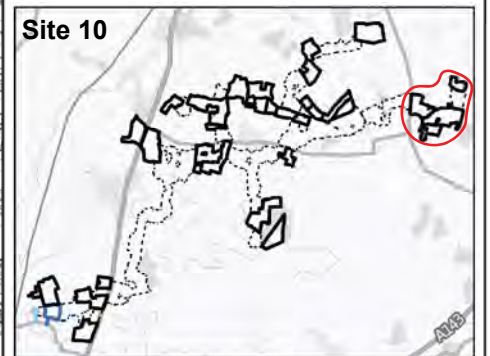
- 1) This ZTV was run on a Digital Surface Model (DSM) using National LIDAR Programme data, 1m resolution grid (2021 and 2022).
- 2) This ZTV was run on a Digital Terrain Model (DTM) using National LIDAR Programme data, 1m resolution grid (2021 and 2022).
- 3) The ZTV was created using ESRI ArcGIS Pro version 3.0.2 Spatial Analyst tool.
- 4) The ZTV illustrates the area of theoretical visibility of the defined area.
- 5) Solar array height was set to 4.5m and observer height was set to 1.6m.
- 6) Viewsheds have been clipped to a 5km search area per individual land parcel.
- 7) The ZTV analysis remains only as a tool in the visual appraisal of the project. It's accuracy is limited to the digital information that it has been based upon and the algorithm used in it's calculation.



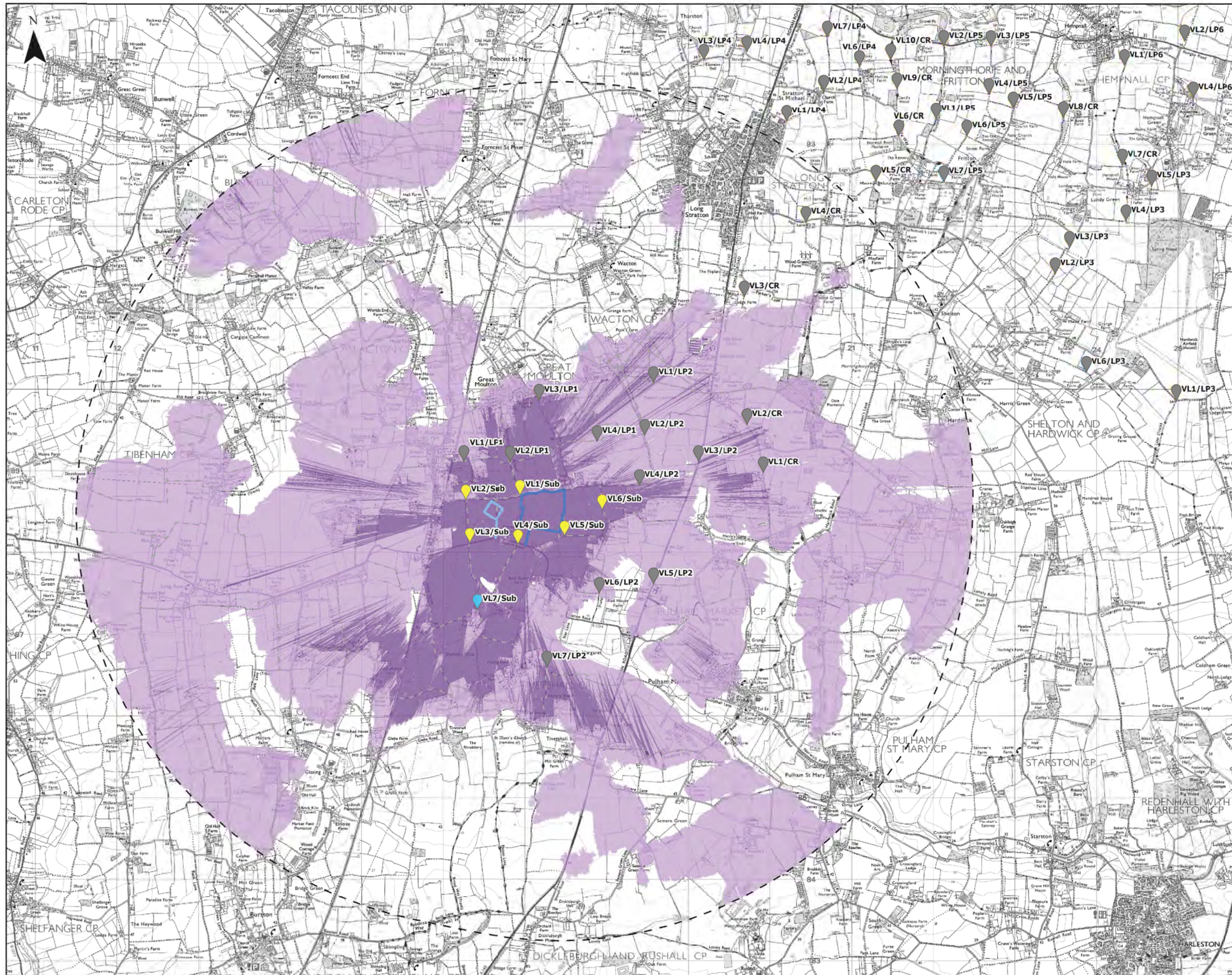
- LEGEND:
- Site Option
 - Search Area
 - Primary View Location
 - Secondary View Location
 - View Locations relating to other sites and cable routes

Zone of Theoretical Visibility (ZTV) of proposed Site:

- Visibility using DSM¹
- Visibility using DTM²



- NOTES:
- 1) This ZTV was run on a Digital Surface Model (DSM) using National LIDAR Programme data, 1m resolution grid (2021 and 2022).
 - 2) This ZTV was run on a Digital Terrain Model (DTM) using National LIDAR Programme data, 1m resolution grid (2021 and 2022).
 - 3) The ZTV was created using ESRI ArcGIS Pro version 3.0.2 Spatial Analyst tool.
 - 4) The ZTV illustrates the area of theoretical visibility of the defined area.
 - 5) Solar array height was set to 4.5m and observer height was set to 1.6m.
 - 6) Viewsheds have been clipped to a 5km search area per individual land parcel.
 - 7) The ZTV analysis remains only as a tool in the visual appraisal of the project. It's accuracy is limited to the digital information that it has been based upon and the algorithm used in it's calculation.



LEGEND:

- Proposed BESS
- Proposed National Grid Substation
- Search Area
- Primary View
- Secondary View Location
- View Locations relating to other sites and cable routes

Zone of Theoretical Visibility (ZTV) of proposed Site:

- Visibility using DSM¹
- Visibility using DTM²

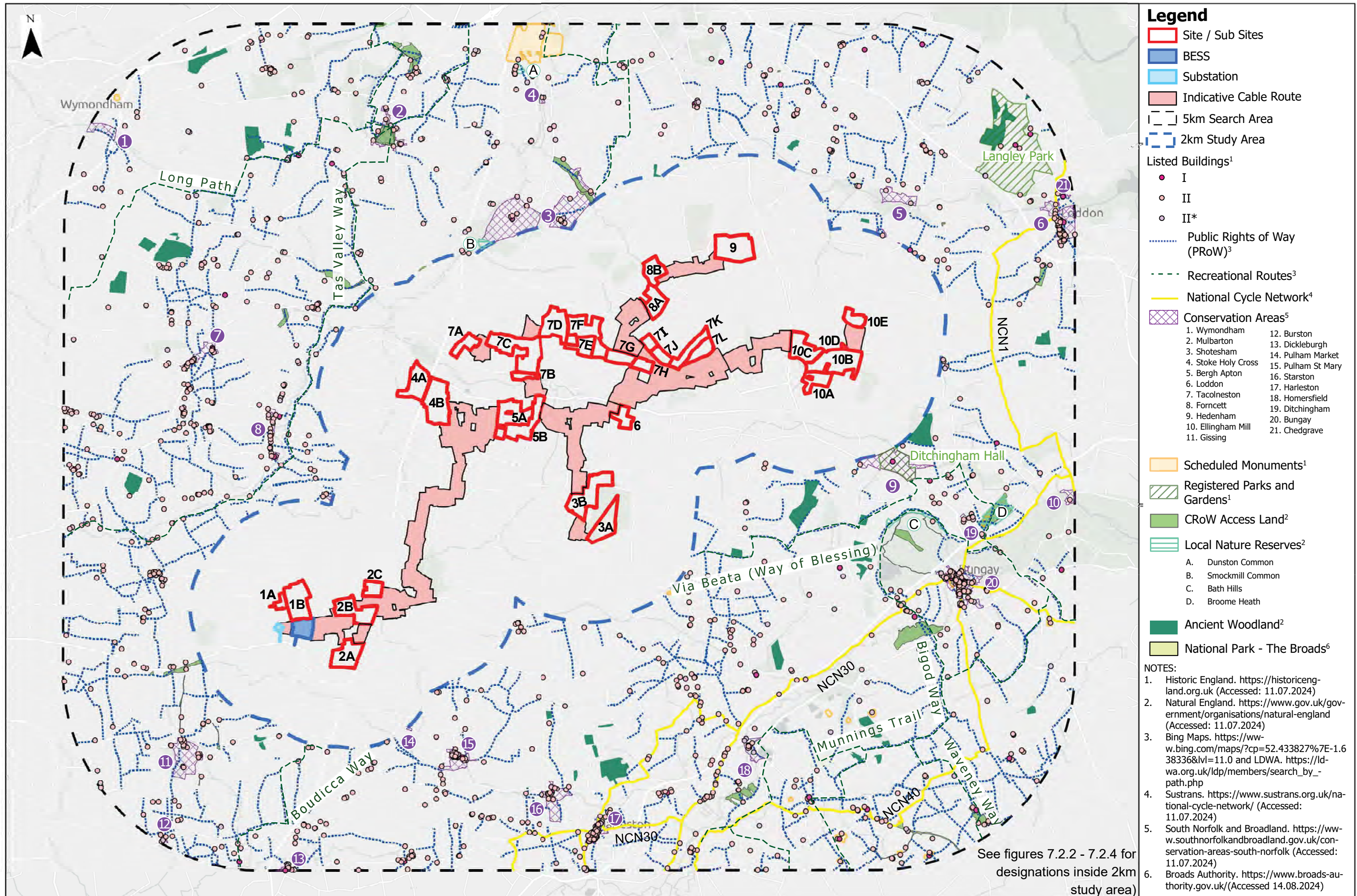


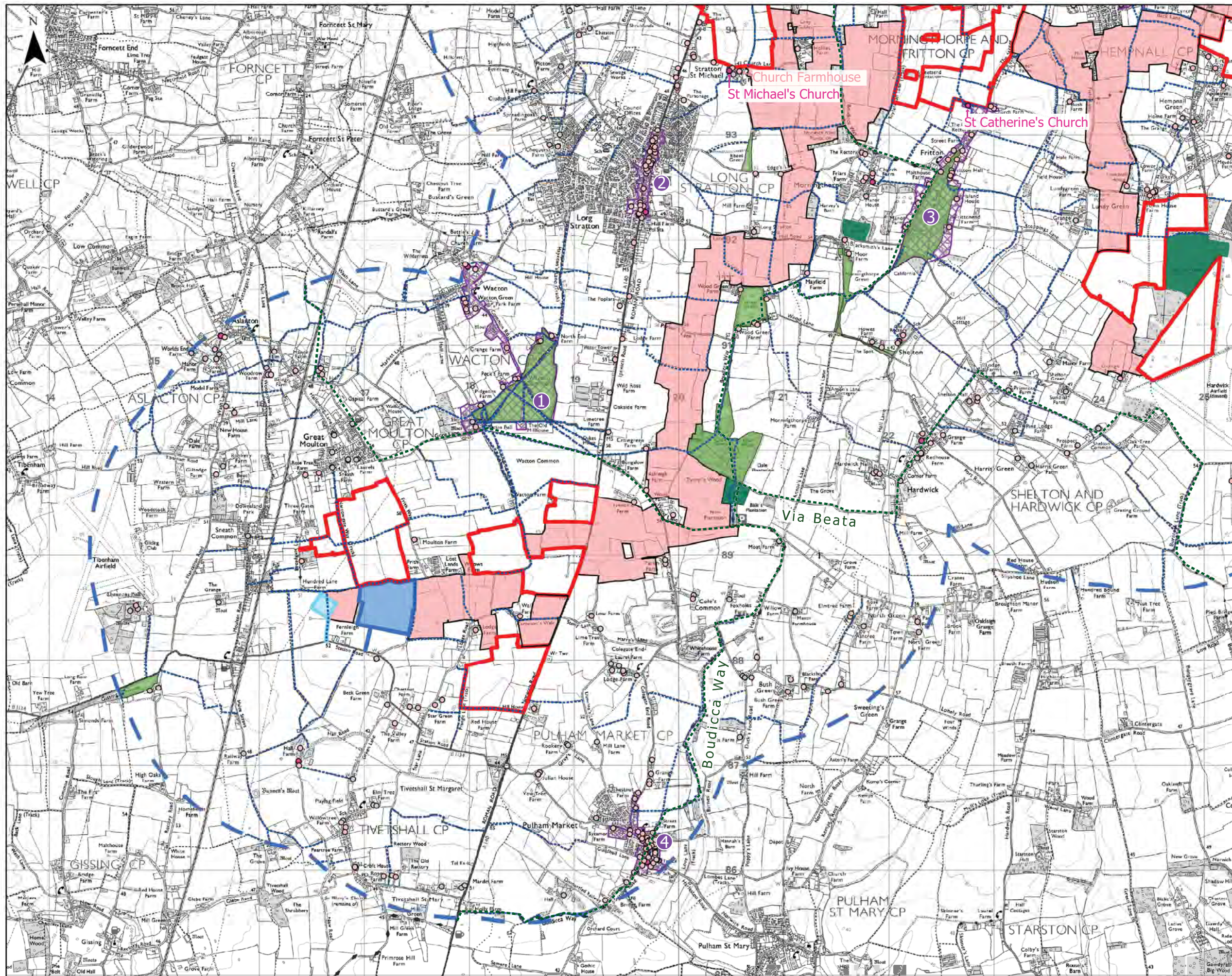
NOTES:

- 1) This ZTV was run on a Digital Surface Model (DSM) using National LIDAR Programme data, 1m resolution grid (2021 and 2022).
- 2) This ZTV was run on a Digital Terrain Model (DTM) using National LIDAR Programme data, 1m resolution grid (2021 and 2022).
- 3) The ZTV was created using ESRI ArcGIS Pro version 3.0.2 Spatial Analyst tool.
- 4) The ZTV illustrates the area of theoretical visibility of the defined area, created from 5 points.
- 5) BESS height was set to 5m, substation height was set to 8m and observer height was set to 1.6m.
- 6) Viewsheds have been clipped to a 5km search area per individual land parcel.
- 7) The ZTV analysis remains only as a tool in the visual appraisal of the project. It's accuracy is limited to the digital information that it has been based upon and the algorithm used in it's calculation.



FIGURE 7.2
LANDSCAPE DESIGNATIONS PLAN





Legend

- Site / Sub Sites
- BESS
- Substation
- Indicative Cable Route
- 2km Study Area

Listed Buildings¹

- I
- II
- II*

Public Rights of Way (PROW)³

Recreational Routes³

Conservation Areas⁴

- Wacton
- Long Stratton
- Fritton
- Pulham Market

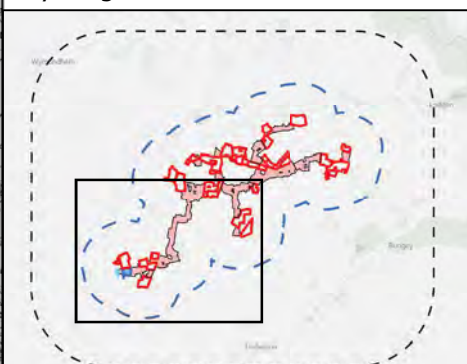
CROW Access Land²

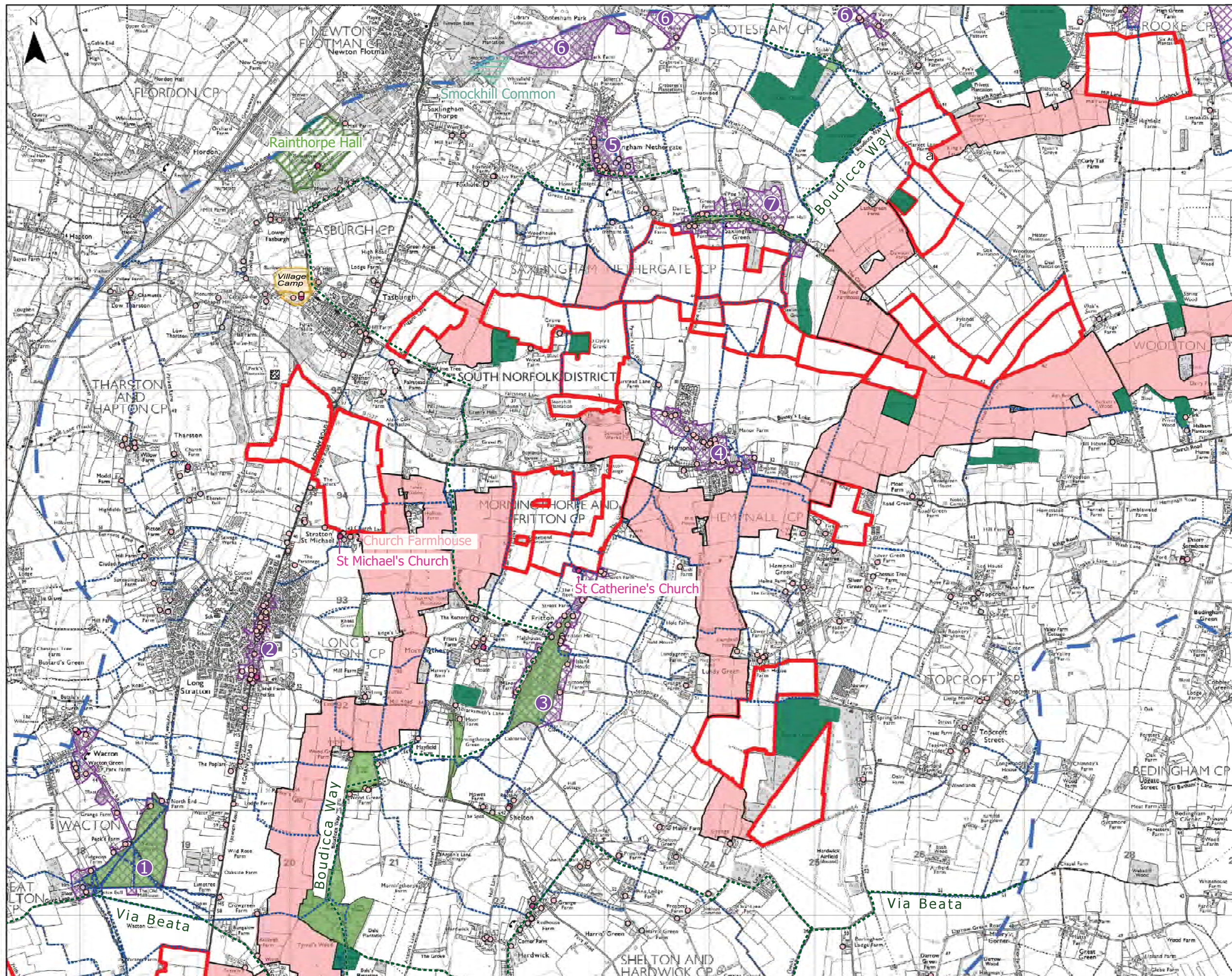
Ancient Woodland²

NOTES:

- Historic England. <https://historicengland.org.uk> (Accessed: 11.07.2024)
- Natural England. <https://www.gov.uk/government/organisations/natural-england> (Accessed: 11.07.2024)
- Bing Maps. <https://www.bing.com/maps/?cp=52.433827%7E-1.638336&lvl=11.0> and LDWA. https://ldwa.org.uk/ldp/members/search_by_path.php
- South Norfolk and Broadland. <https://www.southnorfolkandbroadland.gov.uk/conservation-areas-south-norfolk> (Accessed: 11.07.2024)

Key Diagram:



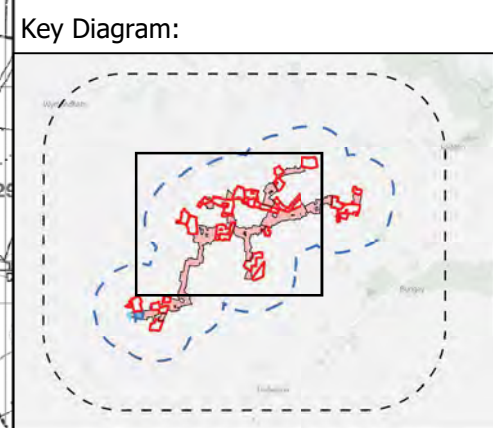


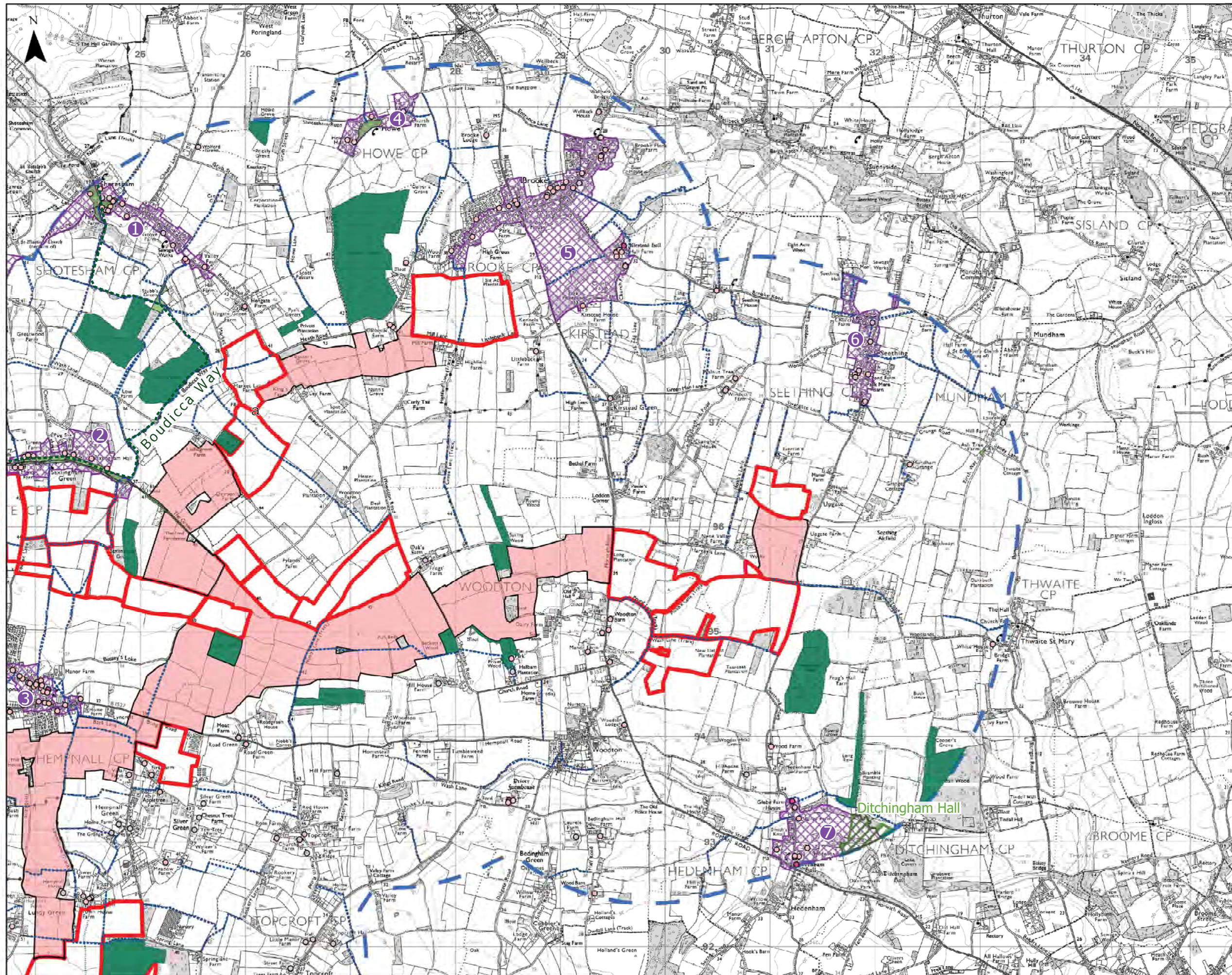
Legend

- Site / Sub Sites
- BESS
- Substation
- Indicative Cable Route
- 2km Study Area
- Listed Buildings¹
 - I
 - II
 - II*
- Public Rights of Way (PROW)³
- Recreational Routes³
- Conservation Areas⁴
 - Wacton
 - Long Stratton
 - Fritton
 - Hempnall
 - Saxlingham Nethergate
 - Shotesham
 - Saxlingham Green
- Scheduled Monuments¹
- Registered Parks and Gardens¹
- CRoW Access Land²
- Ancient Woodland²
- Local Nature Reserves²

NOTES:

- Historic England. <https://historicengland.org.uk> (Accessed: 11.07.2024)
- Natural England. <https://www.gov.uk/government/organisations/natural-england> (Accessed: 11.07.2024)
- Bing Maps. <https://www.bing.com/maps/?cp=52.433827%7E-1.638336&lvl=11.0> and LDWA. https://ldwa.org.uk/ldp/members/search_by_path.php
- South Norfolk and Broadland. <https://www.southnorfolkandbroadland.gov.uk/conservation-areas-south-norfolk> (Accessed: 11.07.2024)





Legend

- Site / Sub Sites
- BESS
- Substation
- Indicative Cable Route
- 2km Study Area
- Listed Buildings¹
 - I
 - II
 - II*
- Public Rights of Way (PRoW)³
- Recreational Routes³
- Conservation Areas⁴
 - 1. Shotesham
 - 2. Saxlingham Green
 - 3. Hempnall
 - 4. Howe
 - 5. Brooke
 - 6. Seething
 - 7. Hedenham
- Registered Parks and Gardens¹
- CRoW Access Land²
- Ancient Woodland²

- NOTES:**
1. Historic England. <https://historicengland.org.uk> (Accessed: 11.07.2024)
 2. Natural England. <https://www.gov.uk/government/organisations/natural-england> (Accessed: 11.07.2024)
 3. Bing Maps. <https://www.bing.com/maps/?cp=52.433827%7E-1.638336&lvl=11.0> and LDWA. https://ldwa.org.uk/ldp/members/search_by_path.php
 4. South Norfolk and Broadland. <https://www.southnorfolkandbroadland.gov.uk/conservation-areas-south-norfolk> (Accessed: 11.07.2024)

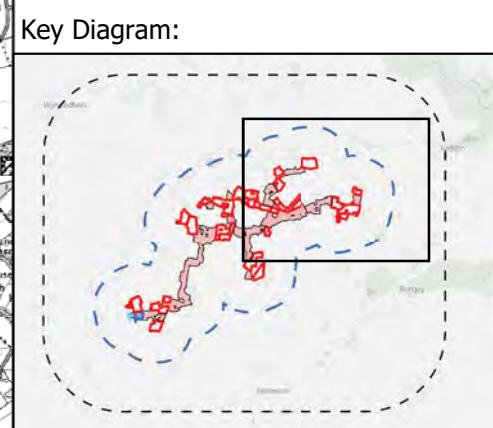




FIGURE 7.3
LANDSCAPE CHARACTER PLAN

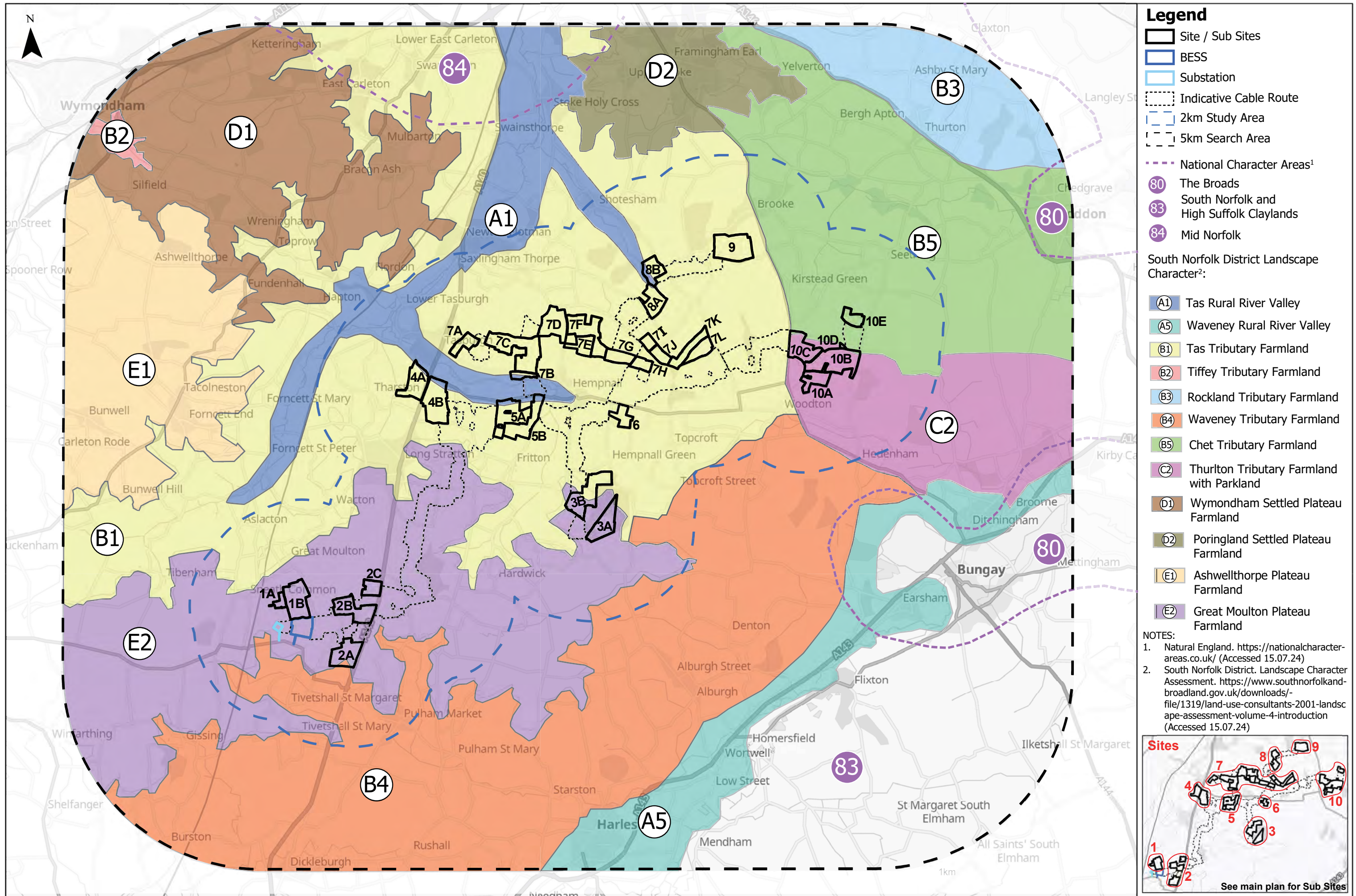
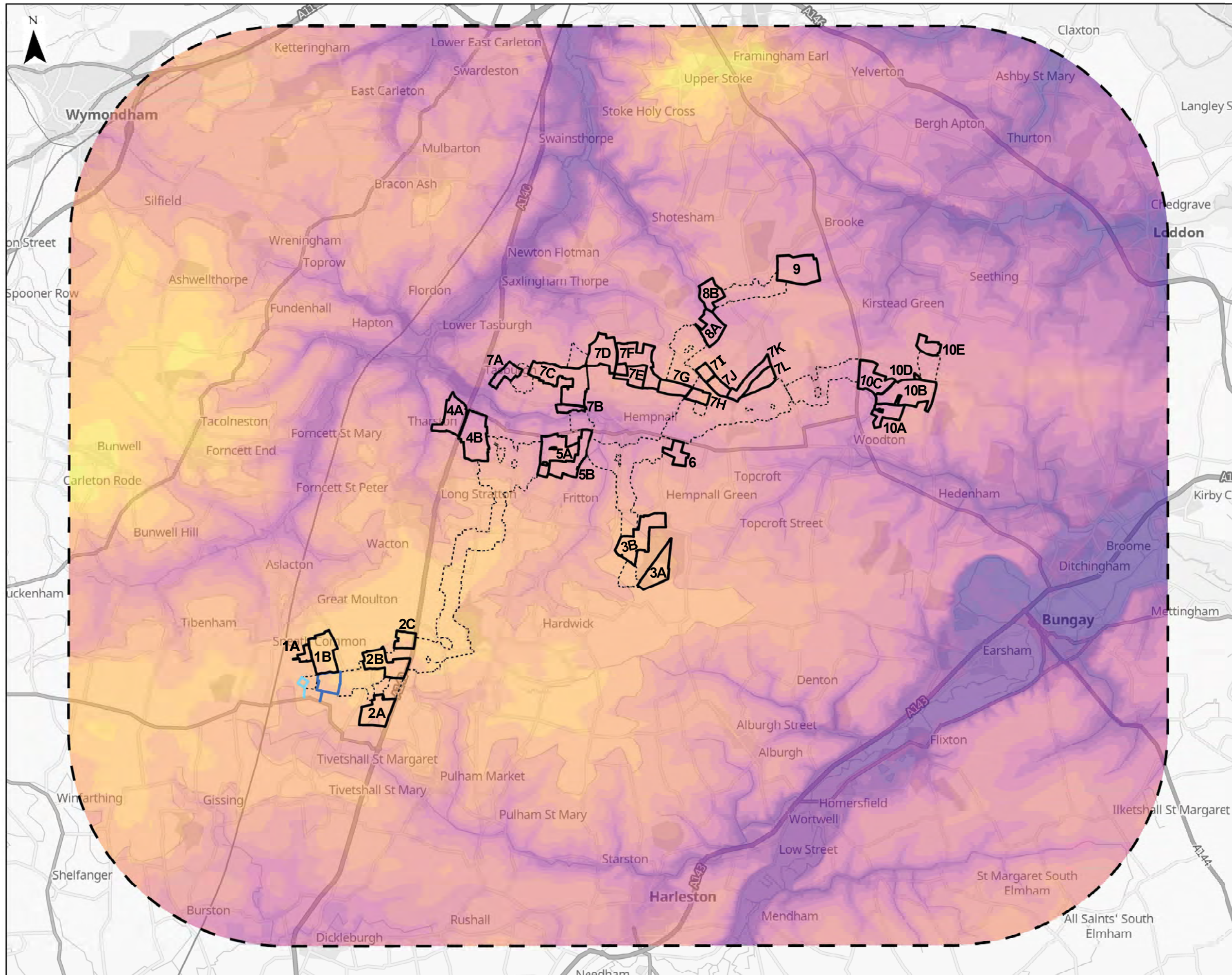




FIGURE 7.4
TOPOGRAPHY PLAN



Legend

- Site / Sub Sites
- Proposed BESS
- Proposed National Grid Substation
- Cable Route Corridor
- 5km Search Area

Topography (AOD m)

- 5 - 0
- 0.1 - 5
- 5.1 - 10
- 10.1 - 15
- 15.1 - 20
- 20.1 - 25
- 25.1 - 30
- 30.1 - 35
- 35.1 - 40
- 40.1 - 45
- 45.1 - 50
- 50.1 - 55
- 55.1 - 60
- 60.1 - 65
- 65.1 - 70
- 70.1 - 75

